

***Social-emotional development is foundational for learning and development in young children, and California is committed to promoting and supporting healthy social-emotional development in all its children.***



*Promoting Social Emotional Competence in California's Young Children*

## **CA CSEFEL Project Fact Sheet**

---

California is participating in a new early childhood professional development opportunity designed to support the social and emotional development of children birth through five. The Center on the Social and Emotional Foundations for Early Learning (CSEFEL) has been funded by the Office of Head Start and the Child Care Bureau, Administration for Children and Families, U.S. Department of Health and Human Services to provide training and technical assistance to selected states. The broad goal of the intensive training and technical assistance (T/TA) activities is to foster professional development of the early care and education workforce that:

- 1) enhances knowledge and skills;
- 2) supports the implementation and sustainability of evidence-based practices; and
- 3) increases the size of the workforce skilled in supporting the social emotional development of young children (birth – 5 years old).

CSEFEL has developed a conceptual framework of evidence-based practices for promoting young children's social and emotional competence and for preventing and addressing challenging behavior. This framework is referred to as the Pyramid Model for Supporting Social-Emotional Competence in Infants and Young Children. CSEFEL has evaluated data from the first five years of implementing the Pyramid Model in several states and believes that the Pyramid Model is a sound framework for early care and education systems. CSEFEL has also developed extensive, user-friendly training materials, videos, and print resources to help California's communities and programs implement the model. CSEFEL's Pyramid Model has been implemented in a few California communities, which already have experienced positive changes for supporting children's social-emotional development and for supporting children with challenging behaviors.

CSEFEL staff will work with California to accomplish these four specific goals:

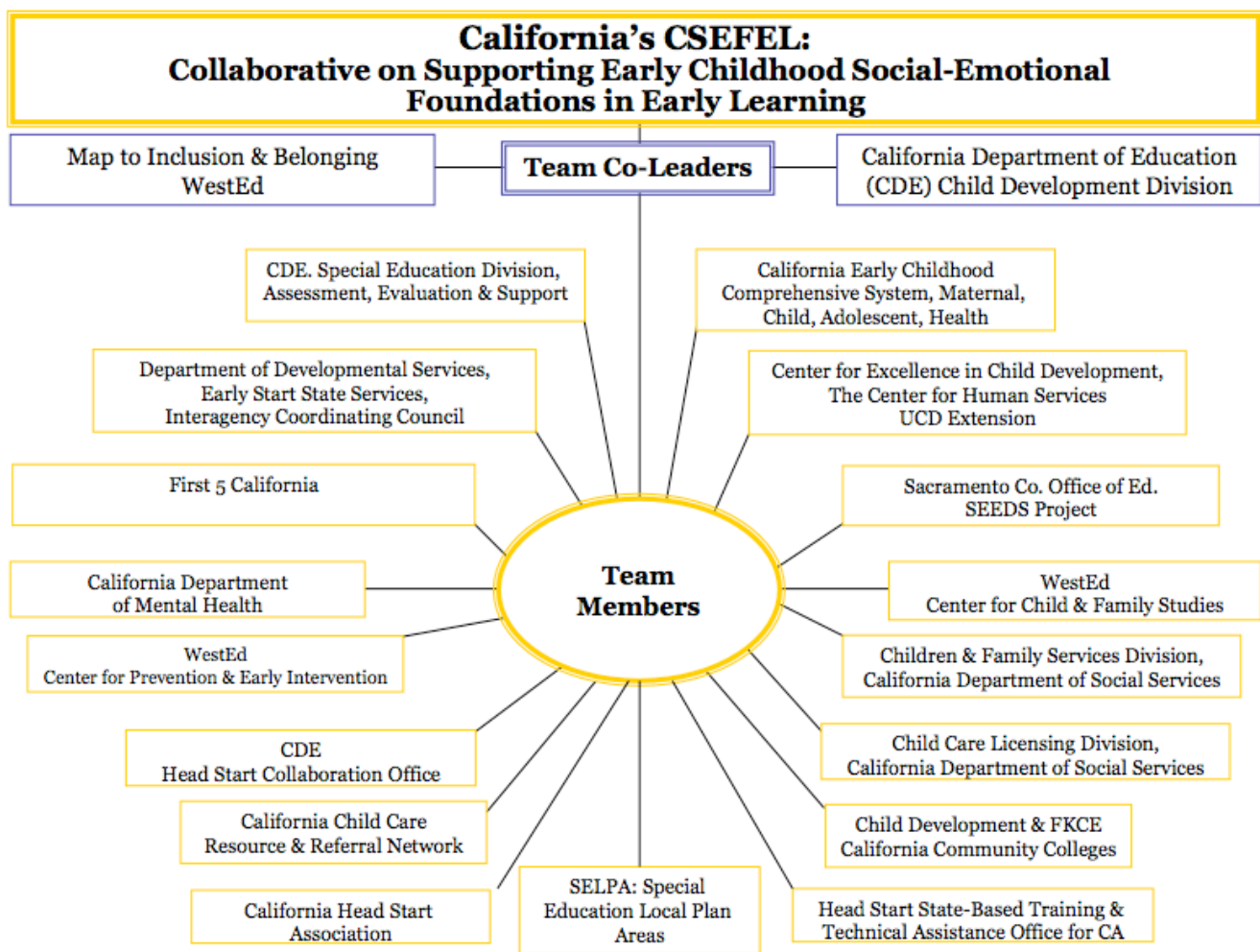
- 1) an enhanced capacity to adopt the Pyramid Model;
- 2) an increased number of high quality trainers and coaches;
- 3) a cadre of local implementation sites; and
- 4) an evaluation of the three outcomes above.

California envisions an integrated system, connecting early childhood programs with trainers versed in the Center for the Social and Emotional Foundations for Early Learning (CSEFEL) conceptual framework and Pyramid Model. The system will maximize collaboration to enhance linkages and methods for local agencies to deliver services and to connect families to appropriate interventions, including children's mental health, Early Start, special education, and medical services.

## California's Collaborative: Supporting Early Childhood Social-Emotional Competence

The state's CSEFEL project (California Collaborative) will enhance existing collaborations by bringing together a leadership team that includes multiple stakeholders. All will work together to resolve state-level barriers, with training for various professional development systems based on a common model, and facilitating access to necessary interventions at the local level.

The California Collaborative recognizes that the CSEFEL conceptual framework, with its emphasis on strong relationships, support for social competence, and the prevention of challenging behaviors, is congruent with its social-emotional foundations for infants, toddlers, and preschool-age children. The California Collaborative team sees an opportunity to collaborate with CSEFEL to train professional development trainers in the CSEFEL model, to work with selected implementation sites, and to assist with strengthening interagency collaboration at the state and local levels.



Having a common vision for social-emotional development across all state-wide training efforts by using the CSEFEL model will create a cohesive and effective approach to addressing needs of very young children with challenging behaviors and special needs that aligns with California's social-emotional learning foundations.